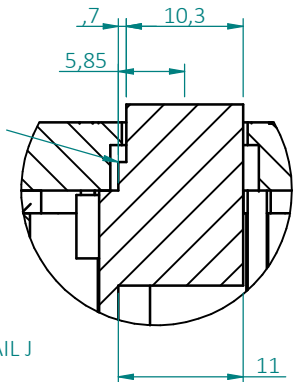
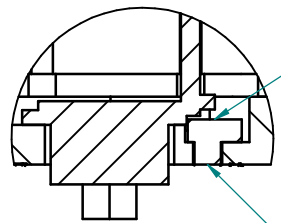


USB stepped profile recess inside back panel



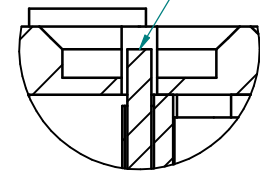
Protrudes inside to prevent D-Type gasket compressing down in front of LEDs



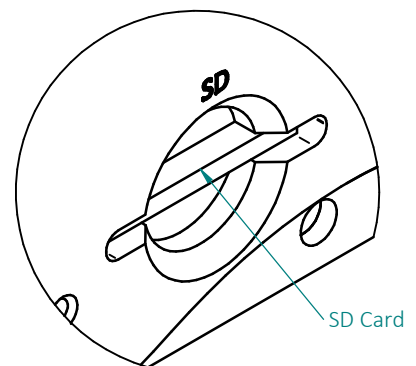
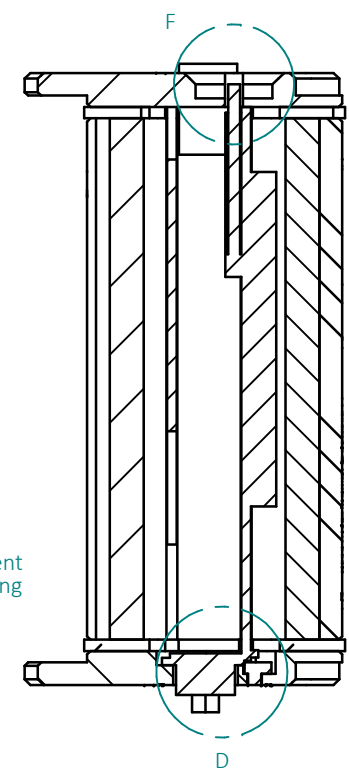
Acrylic window

DETAIL D

SD Card



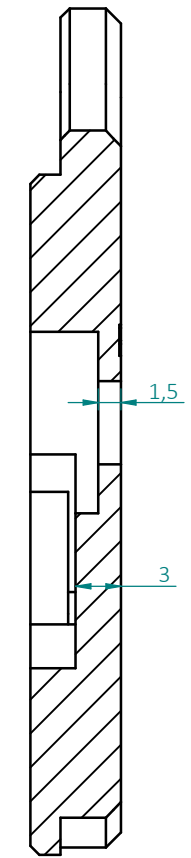
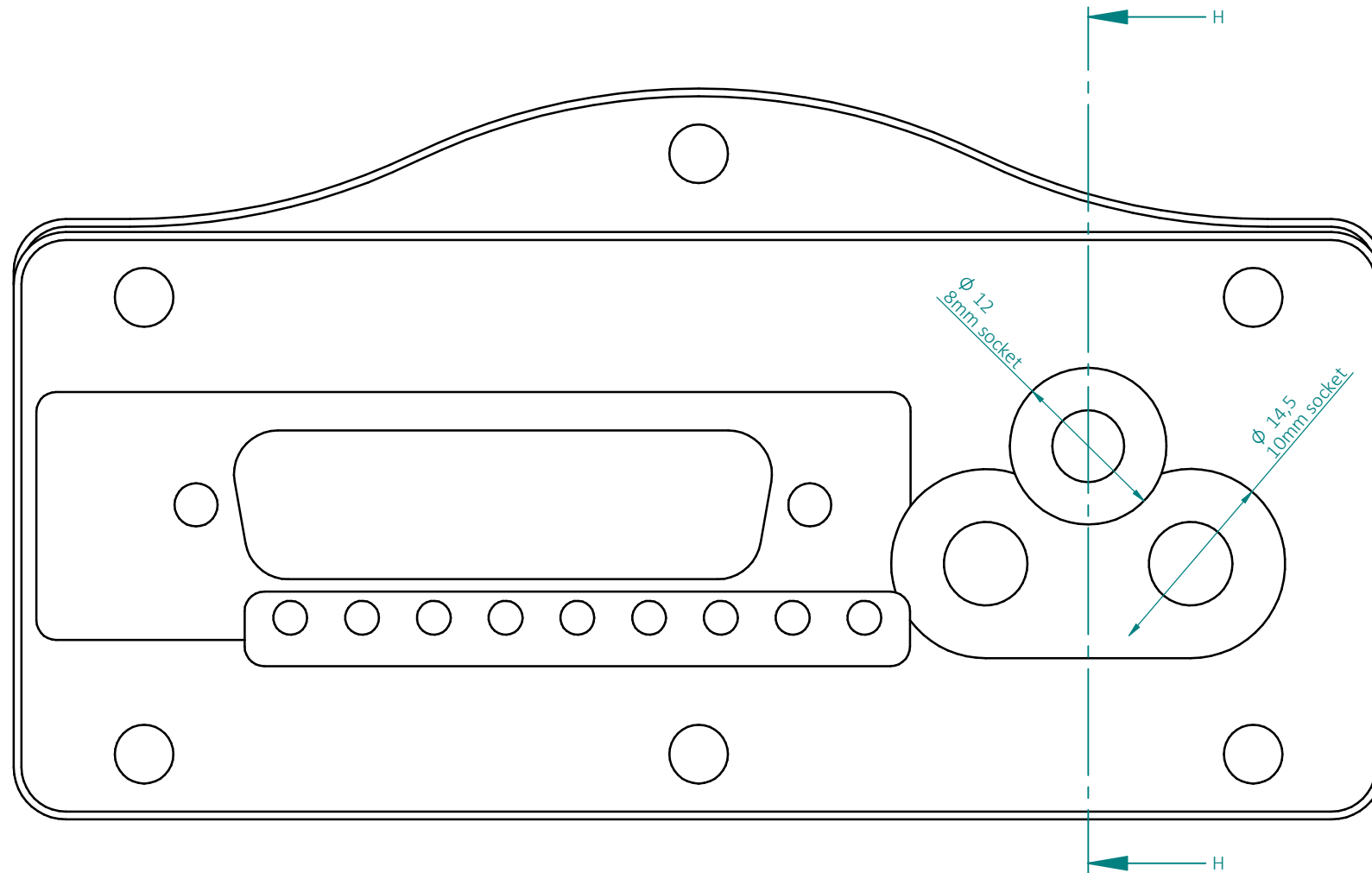
DETAIL F



| | | | | |
|---------------------|--|--|-----------------|--------------|
| MATERIAL | | DRAWN BY | Stuart Hardinge | 07/07/2015 |
| THICKNESS | | CUSTOMER | | |
| www.smartboxx.co.uk | | PART NO. 2895 (GA) (Complete Assembly) -01 | | |
| | | REV | SCALE: 1:2 | SHEET 1 OF 5 |
| | | | | A4 |



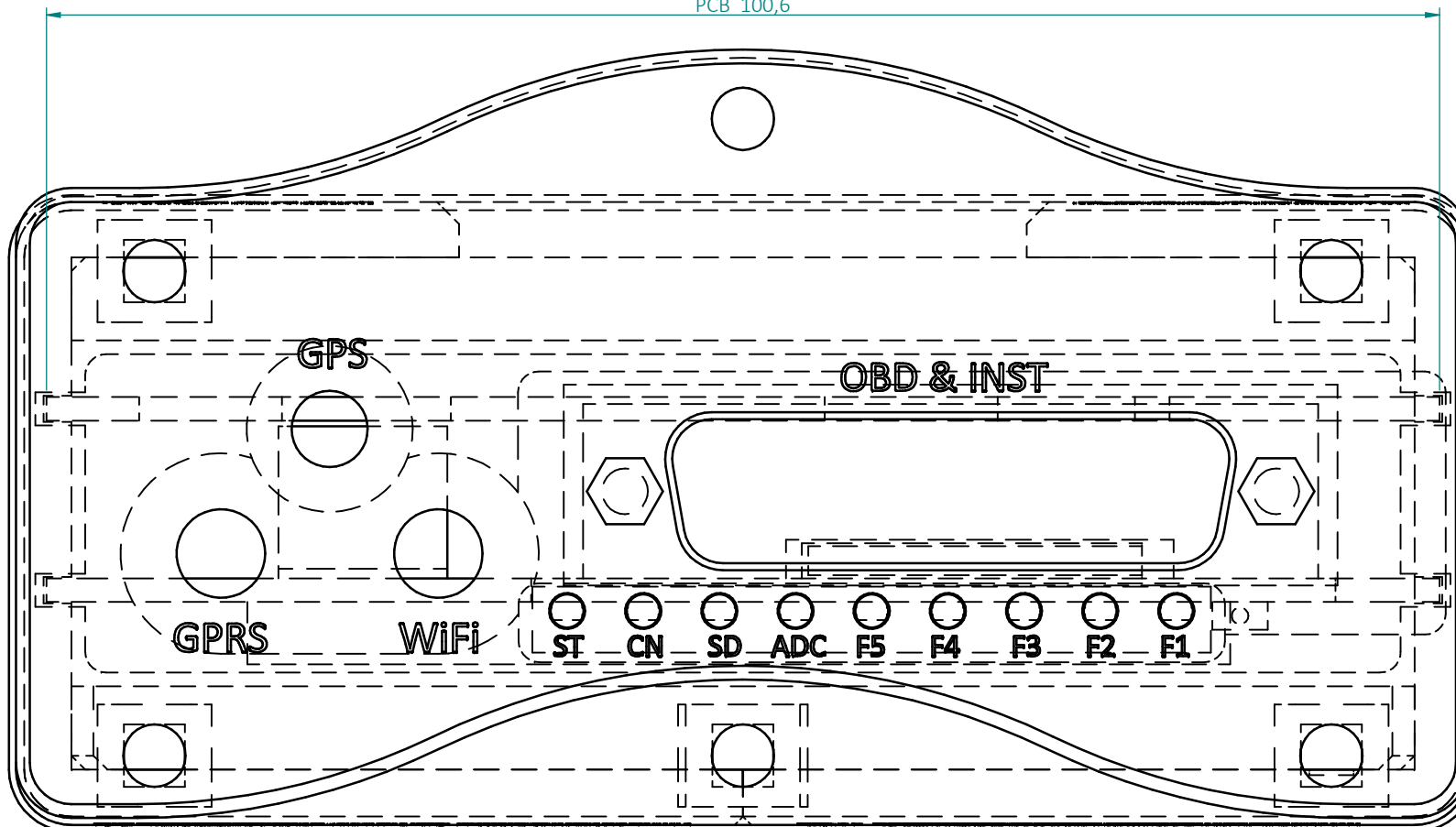
FRONT PANEL - ONLY




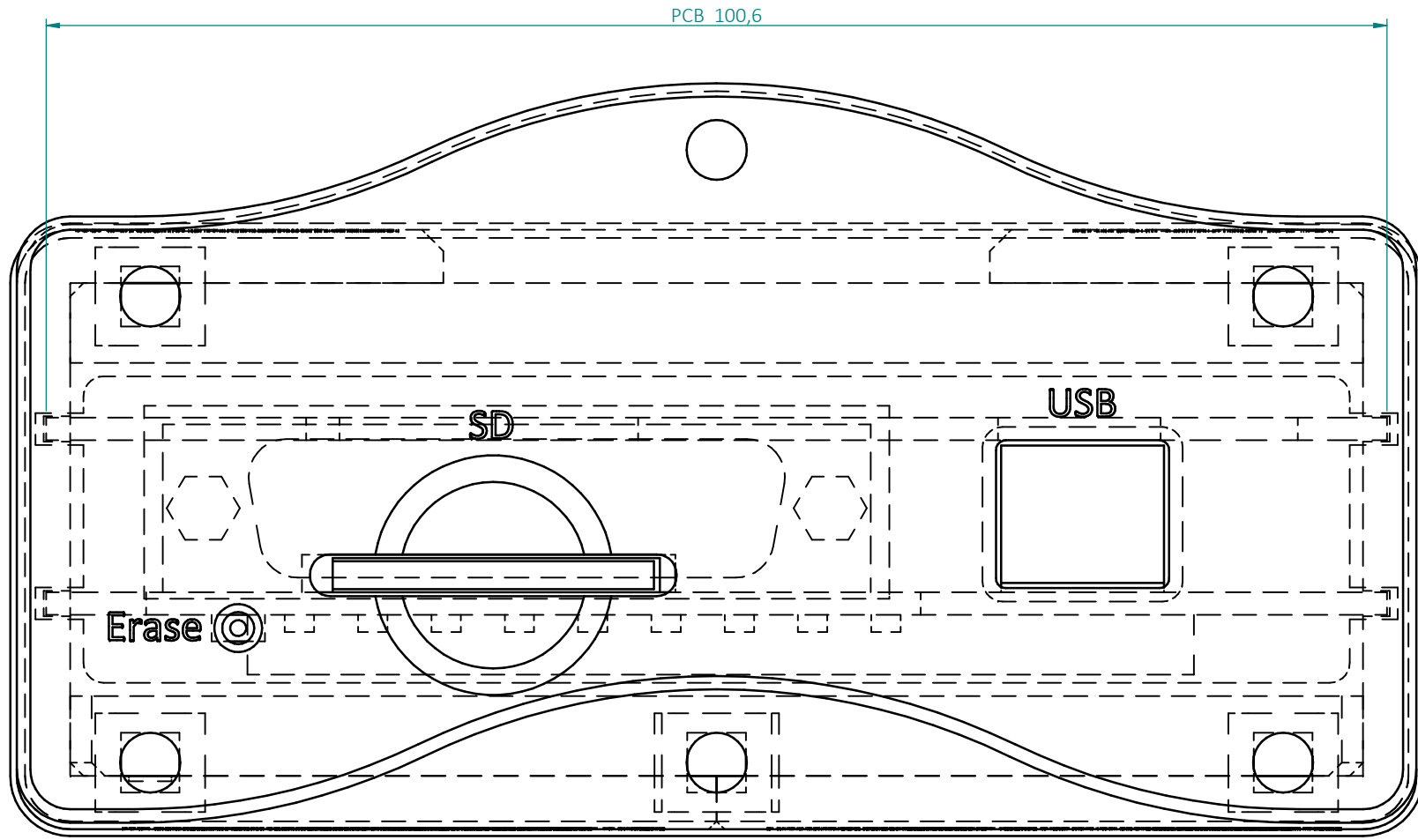
SECTION H-H

PCB 100,6

FRONT PANEL - ASSEMBLY



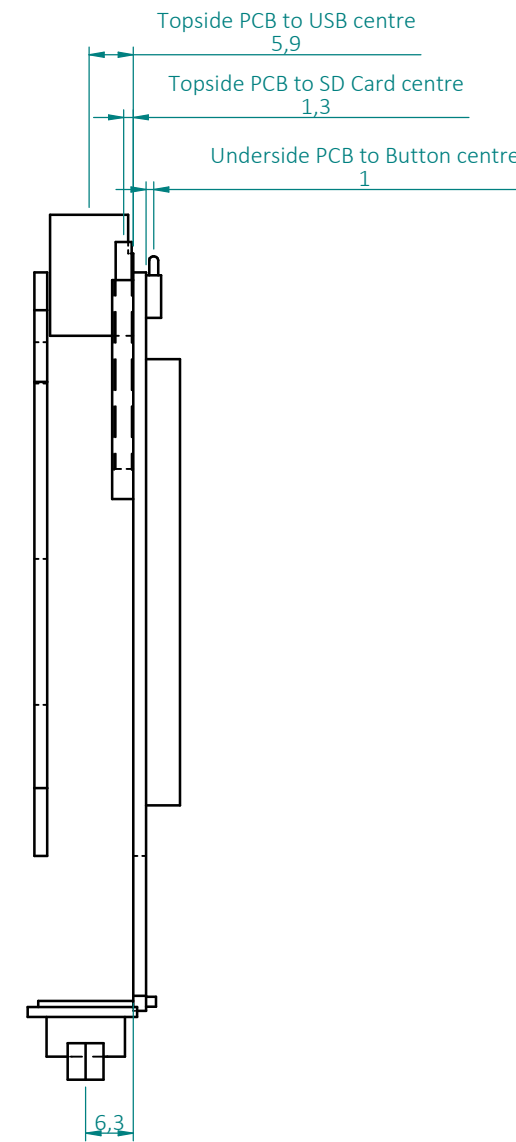
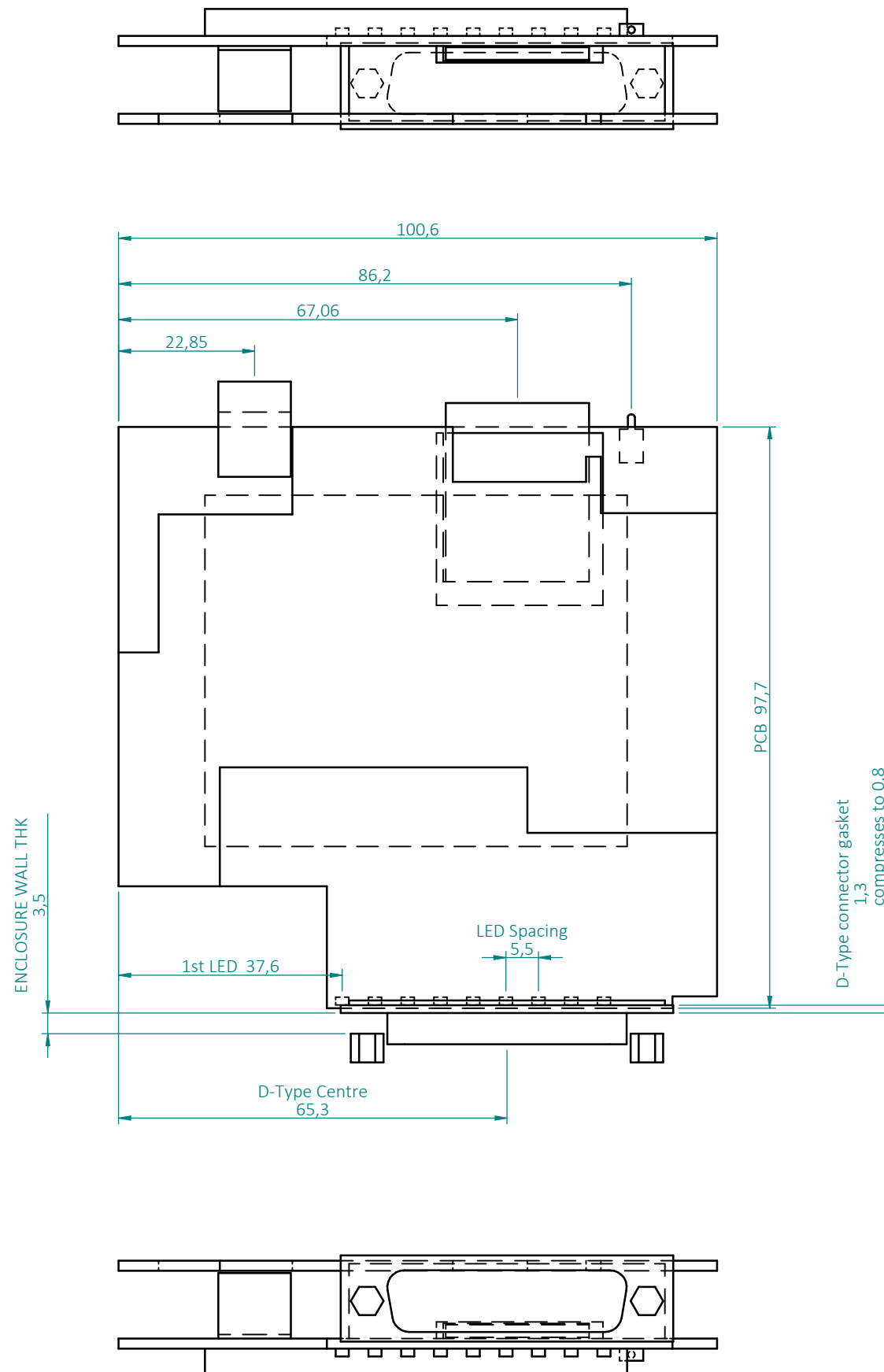
| | | | | |
|---------------------|--|---|-----------------|--------------|
| MATERIAL | | DRAWN BY | Stuart Hardinge | 07/07/2015 |
| THICKNESS | | CUSTOMER | | |
| www.smartboxx.co.uk | |  | | |
| | | | | |
| REV | | SCALE: | 2:1 | SHEET 2 OF 5 |
| | | | | A3 |



REAR PANEL - ASSEMBLY

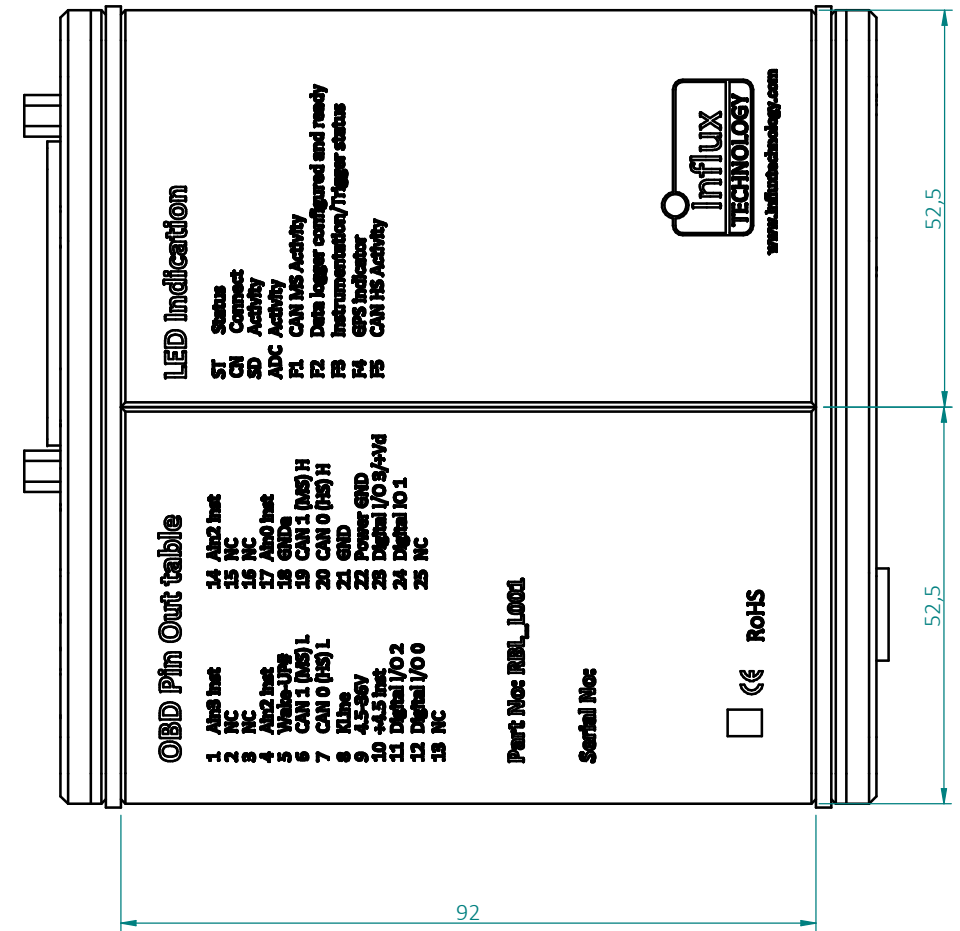
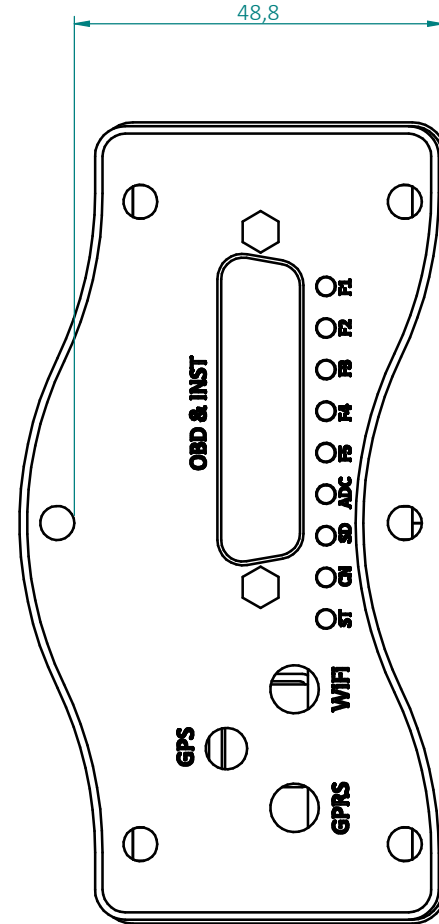
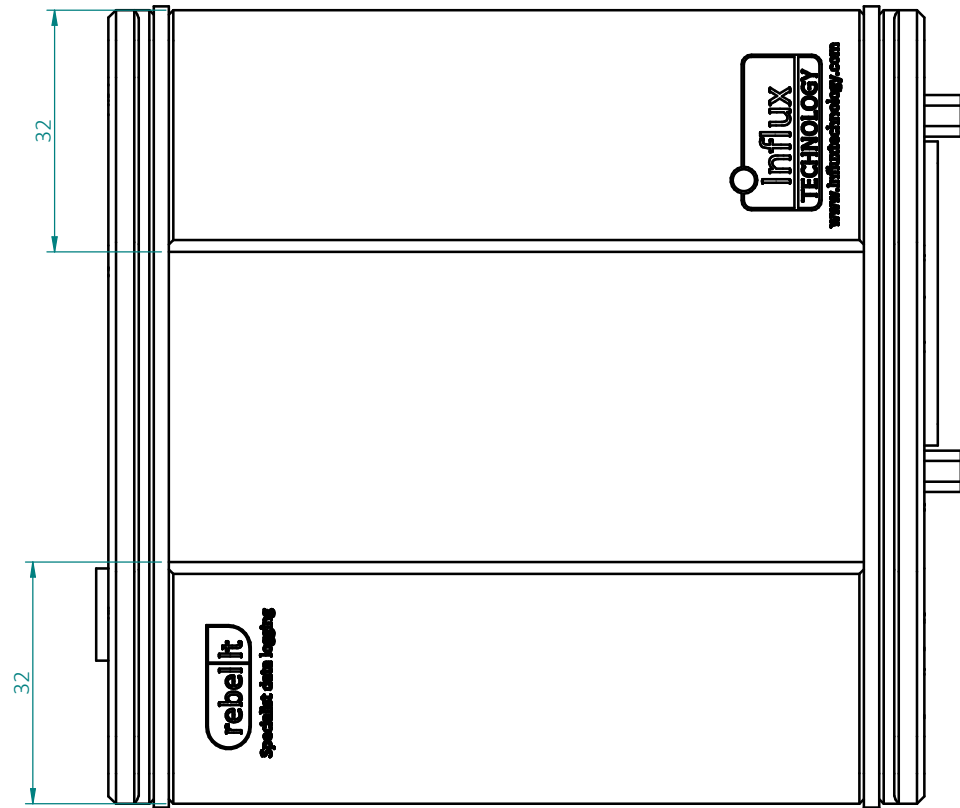
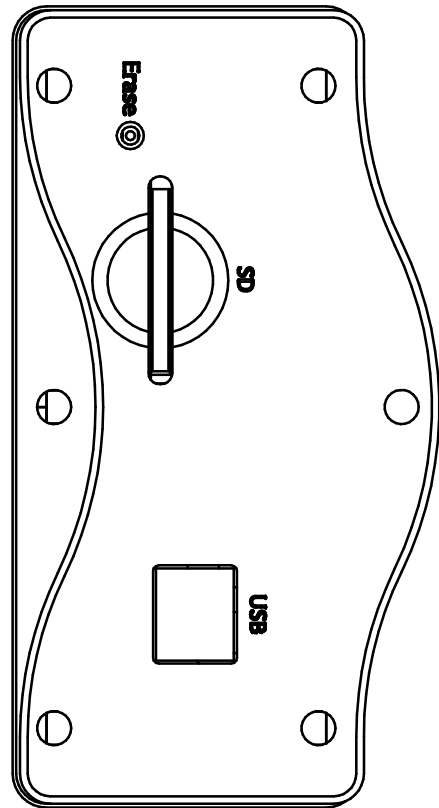
| | | | | |
|---------------------|--|--|-----------------|--------------|
| MATERIAL | | DRAWN BY | Stuart Hardinge | 07/07/2015 |
| THICKNESS | | CUSTOMER | | |
| www.smartboxx.co.uk | | PART NO. 2895 (GA) (Complete Assembly) -01 | | |
| | | REV | SCALE: 2:1 | SHEET 3 OF 5 |
| | | | | A4 |





PCB REP

| | | | | |
|---------------------|--|--|-----------------|--------------|
| MATERIAL | | DRAWN BY | Stuart Hardinge | 07/07/2015 |
| THICKNESS | | CUSTOMER | | |
| www.smartboxx.co.uk | | PART NO. 2895 (GA) (Complete Assembly) -01 | | |
| | | REV | SCALE: 1:1 | SHEET 4 OF 5 |
| | | | | A3 |



OBD Pin Out table

| | |
|----|---------------|
| 1 | Alert Inpt |
| 2 | NC |
| 3 | NC |
| 4 | NC |
| 5 | Auto Inpt |
| 6 | Wake-Up |
| 7 | CAN 1 (MSG) L |
| 8 | CAN 0 (MSG) L |
| 9 | K-Line |
| 10 | +4.5 Inpt |
| 11 | Digital I/O 2 |
| 12 | Digital I/O 0 |
| 13 | NC |
| 14 | Alert Inpt |
| 15 | NC |
| 16 | NC |
| 17 | Auto Inpt |
| 18 | GNDA |
| 19 | CAN 1 (MSG) H |
| 20 | CAN 0 (MSG) H |
| 21 | GNDD |
| 22 | Power GND |
| 23 | Digital I/O 1 |
| 24 | Digital I/O 1 |
| 25 | NC |

- LED Indication**
- ST Status
 - CH Connect
 - SD Activity
 - ADC Activity
 - FI CAN MS Activity
 - F2 Data logger configured and ready
 - F4 Instrumentation/Trigger status
 - F5 GPRS Indicator
 - CAN HS Activity

Part No: **IBDL_1001**
 Serial No:



OVERALL ENCLOSURE VIEWS AND PRINTABLE AREAS

UNLESS OTHERWISE SPECIFIED DIMENSIONS ARE IN MILLIMETERS

| | | | | |
|---------------------|--|--|-----------------|--------------|
| MATERIAL | | DRAWN BY | Stuart Hardinge | 07/07/2015 |
| THICKNESS | | CUSTOMER | | |
| www.smartboxx.co.uk | | PART NO. 2895 (GA) (Complete Assembly) -01 | | |
| | | REV | SCALE: 1:1 | SHEET 5 OF 5 |

